
Comfort-Aire®

Century®

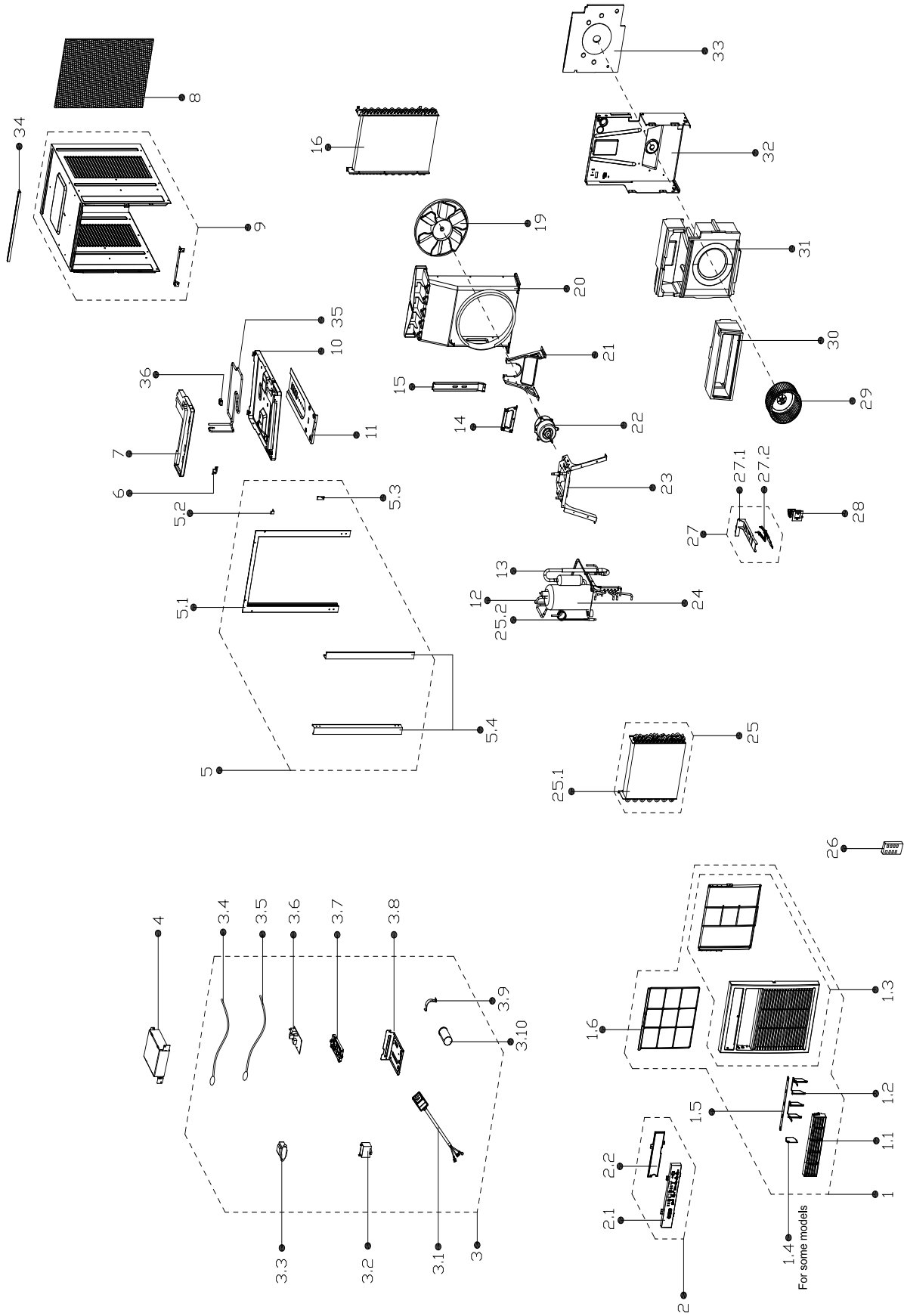


REPLACEMENT PARTS LIST

Room Air Casement

CD-81Q

EXPLODED VIEW



REPLACEMENT PARTS

Location	Part Name	Quantity	Part No.
1	Panel subassembly	1	12120300002964
1.1	Air outlet frame	1	12120300002987
1.2	Horizontal louver	4	12120300002985
1.3	Panel subassembly	1	12120300002965
1.5	Connecting rod of louver	1	12120300002988
1.6	Air filter	1	12120300002986
2	Display box subassembly	1	17220300A16548
2.1	Control panel	1	12120300002993
2.2	Cover of control panel	1	12120300002992
3	Electronic control box subassembly	1	17220300003095
3.1	Power cord subassembly	1	17401202000143
3.2	Capacitor of fan motor	1	17400101000002
3.3	Linear Transformer	1	11203103001314
3.4	Pipe Temperature Sensor	1	11201007003444
3.5	Room temperature sensor	1	11201007003440
3.6	Main control board subassembly	1	17120300003823
3.7	Bracket of main control board	1	12120300003724
3.8	Electronic control box subassembly	1	12220300000512
3.9	Capacitor clip	1	12200203000007
3.10	Capacitor of compressor	1	17400103000052
4	Cover of electronic control box	1	12220300000499
5	Installation accessory	1	12020300000267
5.1	Installation accessory	1	12120300001298
5.2	Fixing plate	1	12220300000528
5.3	Fixing board	1	12220300000535
5.4	Side shutter frame	2	12220300000879
6	Fixing plate	1	12220300000531
7	Condenser water tray	1	12820300000027
8	Rear net	1	12120300000929
9	Cabinet	1	12220300002478
10	Chassis Assembly	1	12220300001111
11	Installation Board	1	12220300000871
12	Discharge pipe	1	15120300000773
13	Suction pipe assembly	1	15120300001346
14	Cover of motor	1	12220300000445
15	Support plate	1	12220300000861
16	Condenser Assembly	1	15820300000667
19	Axial flow fan	1	12100105000012
20	Rear barrier board subassembly	1	12120300000566
21	Supporter of fan motor	1	12220300001107
22	Single phase asynchronous motor	1	11002012000933
23	Bracket of compressor assembly	1	12220300001106
24	Fixed speed rotary compressor	1	11103010000932
25	Evaporator Assembly	1	15820300002641
25.1	Evaporator	1	15820300002640
25.2	Capillary subassembly	1	15120300001208
26	Remote controller	1	17317000A01189
27	Fresh air door subassembly	1	12120300002967
27.1	Bracket of fresh air door	1	12120300002989
27.2	Connecting rod of fresh air door	1	12120300002990
28	Fresh air door	1	12120300000231
29	Centrifugal fan	1	12100103000167
30	Volute shell (above)	1	12820300000100
31	Volute	1	12820300000070
32	Front separating board subassembly	1	12220300000570
33	Volute	1	12820300000037
34	Top shutter frame subassembly	1	12120300001340
35	Cooling coil assembly	1	15120300002832
36	Fixing clamp	3	12100303000050

Due to ongoing product improvements, specifications and dimensions are subject to change and correction without notice or incurring obligations. Determining the application and suitability for use of any product is the responsibility of the installer. Additionally, the installer is responsible for verifying dimensional data on the actual product prior to beginning any installation preparations.

Incentive and rebate programs have precise requirements as to product performance and certification. All products meet applicable regulations in effect on date of manufacture; however, certifications are not necessarily granted for the life of a product. Therefore, it is the responsibility of the applicant to determine whether a specific model qualifies for these incentive/rebate programs.

Comfort-Cire®  **Century**®

1900 Wellworth Ave., Jackson, MI 49203 • Ph. 517-787-2100 • www.marsdelivers.com

